



Ultrasound machines use sound at a frequency above the human range of hearing to create pictures of patients' insides. Meditech iSono, transmit the image directly to iOs hardware , portable screen, making it easier for doctors to make crucial decisions.

You can take this device and get a scan of the patient's ultrasound of the heart immediately right at the bedside

iSono gives us an idea of the severity of their condition and so physicians at that time can make a better judgment call as to whether they need to be admitted.”

Feature:

- Workable with Tablet or Smart Phone
- Built-in and replaceable battery
- Advanced digital imaging technology, clear image
- High cost-effective
- Wireless connectivity, easy to operate
- Small and light , easy to carry
- Applicable in emergency, clinic, outdoor and vet inspection
- Intelligent terminal platform, powerful expansion functions on application, storage, communication, printing

Meditech Equipment Co., Ltd (Meditech Group)

Address: Nanjing Road No.100, Qingdao,
Shandong Province, P. R. China

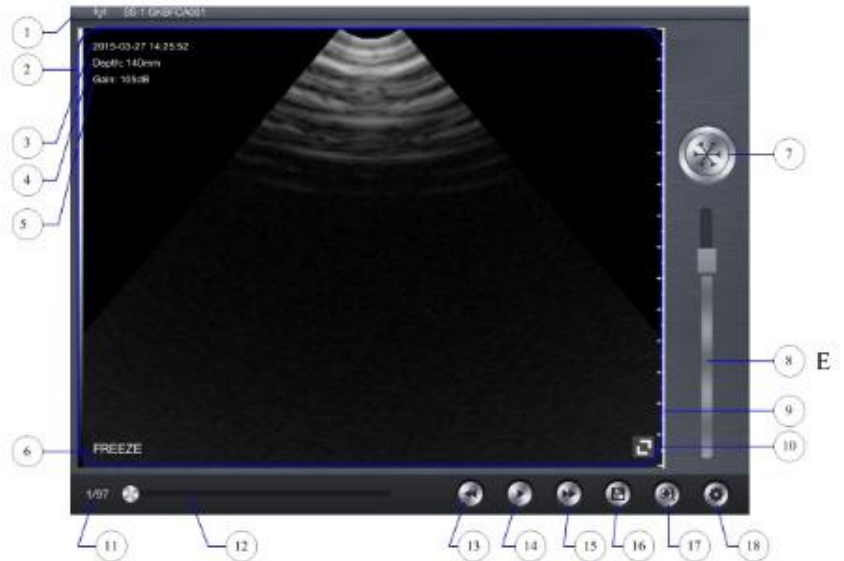
Tel: 86-532-85832673 81705331

Fax: 86-532-81705332

Email: sales@meditech.cn

Web: www.meditech.com.cn





Specifications:

- Scanning system: array sweep;
- Frequency: 3.5MHz/5MHz (convex array)
7MHz/10MHz (linear array)
- Depth: 100-200mm, Adjustable
- Field of view(convex array): 80 degree
- Screen: Smart phone or tablet screen
- Supporting system: Apple Mac OSx (Android,
Windows system version
coming soon)
- Display mode: B
- Frame rate: 12f/s
- Image gray scale: 256 level
- Image Storage: Using intelligent terminal customers to use (mobile
phones, Tablet PC) storage devices
- Measure: distance, area, obstetrics and other
- Power: by built-in battery
- Power consumption: 10W (unfreeze) /4W (freeze)
- Battery working time: 3 hours

Size: 156mm×60mm×24mm

Weight: 308 gram

Accessories

ITEMS	INCLUDED
The Wireless Ultrasound Probe	✓
USB Cable for Charging	✓
Wrist Strap	✓
The Wireless Ultrasound Scanner Users' Guide	✓

